

## Assembly Checklist - IZIP

# 3 Zuma



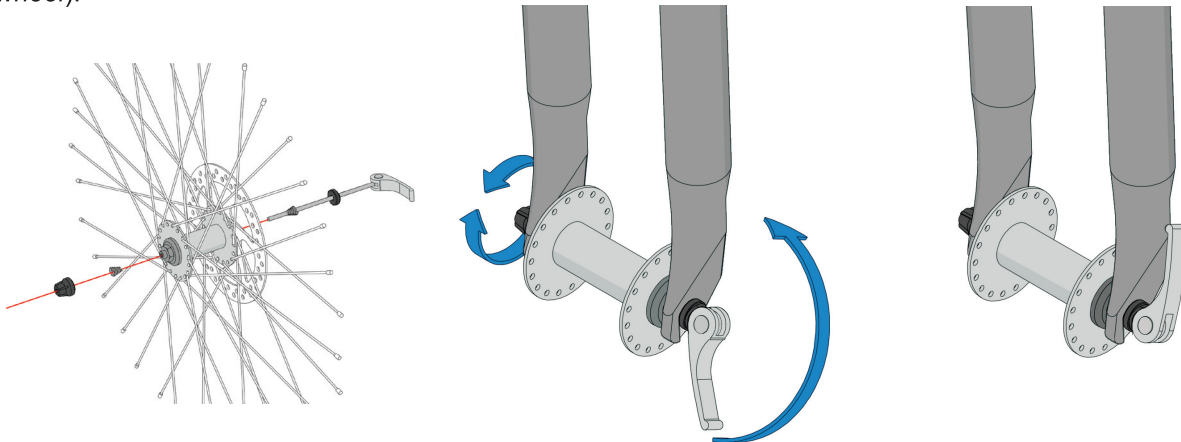
**CURRIE TECHNOLOGIES**  
Hybrid Electric Bicycles & Scooters



\*This guide is intended to be followed by an experienced bicycle mechanic. If you have any doubts about your ability to safely assemble a bicycle, please let a professional do the work for you!

\*While assembling this bicycle, be sure to refer to the *Bicycle torque values* reference sheet at the back of your owner's manual. Components that are not properly tightened could fail, causing injury.

**1. Install the front wheel** by following the instructions on page 68 of your owner's manual (*Installing a quick release front wheel*).



**2. Slide the seat post into the bicycle, then close the seat post quick release.** Refer to the instructions on page 66 of your owner's manual (*Seat post clamp: quick release*) for detailed instructions. Adjustment instructions specifically for saddle position can be found on page 64 of the owner's manual, under *seat and seat post*.

