

## Assembly Checklist - IZIP

# E3VIBE



**CURRIE TECHNOLOGIES**  
Hybrid Electric Bicycles & Scooters

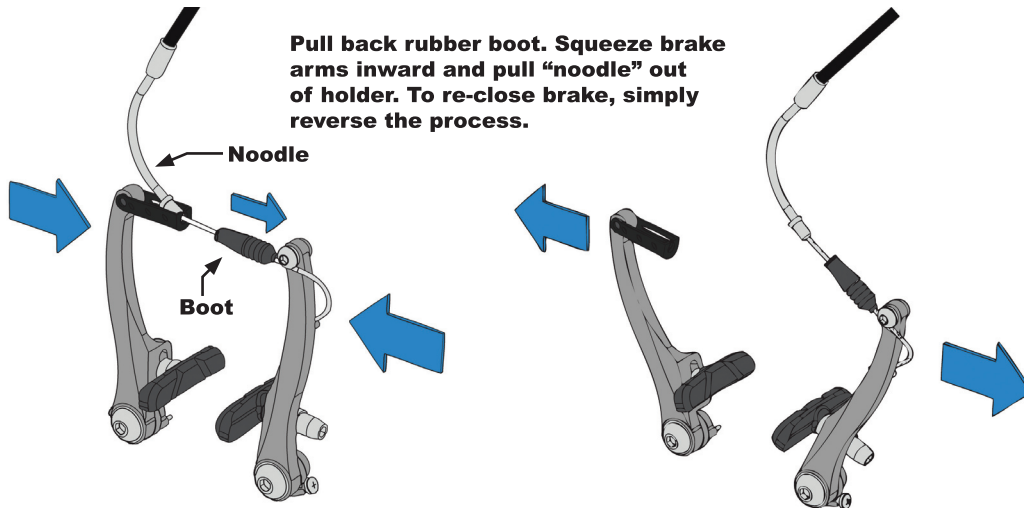


\*This guide is intended to be followed by an experienced bicycle mechanic. If you have any doubts about your ability to safely assemble a bicycle, please let a professional do the work for you!

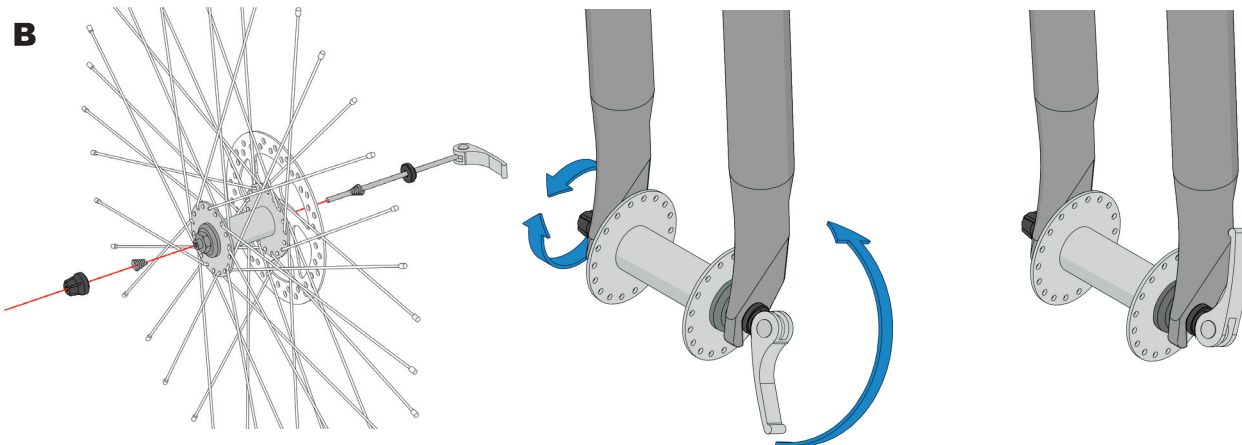
\*While assembling this bicycle, be sure to refer to the *Bicycle torque values* reference sheet at the back of your owner's manual. Components that are not properly tightened could fail, causing injury.

**1. Install the front wheel** by following the instructions on pages 68-69 of your owner's manual (*Installing a quick release front wheel*). The front brake needs to be disengaged before the wheel will fit into the fork (see diagram below).

**A**



**B**



**Install quick release skewer, tighten, and close, following the instructions in your owner's manual (pg 68-69).**